

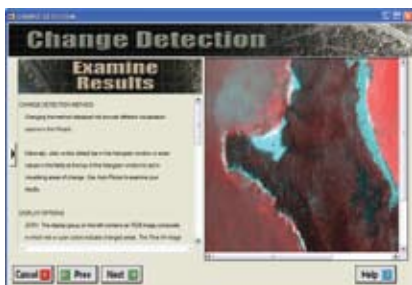


# ITT

## Visual Informations Solutions

# ENVI SPEAR Tools

Your image processing & analysis workflow just got easier.



*ENVI SPEAR Tools provide an easy, step-by-step solution for achieving expert level image processing results.*



Visit us at [www.ittvis.com/ENVI](http://www.ittvis.com/ENVI).

In industries across disciplines, professionals are using geospatial imagery more and more for the information it provides about a geographic area of interest. From categorizing terrain for defense and intelligence operations, to detecting change over time along a shoreline to determine the extent of hurricane damage, the uses for imagery continue to grow.

### What Can SPEAR Tools Do for You?

Previously, processing and analyzing geospatial imagery was considered complex, often only performed by experienced image scientists. Now, ENVI SPEAR Tools – included with your ENVI software – provides you with automated workflows to make the most commonly needed image processing and analysis routines easy, regardless of your image processing and analysis experience or professional background.

This unique set of wizard-based tools provides you with advanced, proven processes and procedures, so the results you get are scientifically accurate and precise, allowing you to achieve expert level results.

### The Easy-to-use ENVI SPEAR Tools Interface

The easy-to-use ENVI SPEAR Tools interface includes step-by-step instructions and integrated help dialogues to image processing and analysis procedures so you can easily:

#### Perform Change Detection

Changed areas can be highlighted and compared to images from two datasets using band ratio techniques

#### Detect Anomalies

Search an image for unique objects that are not native to the environment

#### Browse Metadata

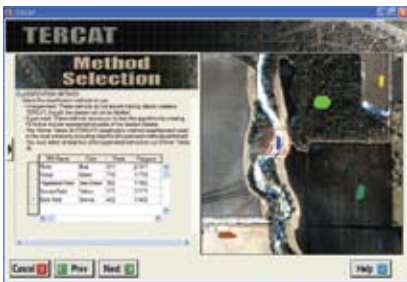
Browse NITF metadata for multiple images to assess exploitation suitability

*Engineered for life*



# ITT

## Visual Informations Solutions



### **Perform Terrain-based Orthorectification**

Compensate for image distortion due to terrain differences

### **Register Images to Maps**

Improve the georeferencing of an image by tying it to an accurate base map

### **Bridge to Google Earth™**

Export and open data in Google Earth™

### **Pan-sharpen Images**

Panchromatic images can be fused with multispectral data to create colorized high resolution images

### **Detect Lines of Communication**

Roads and waterways can be highlighted and emphasized to aid in map generation

### **Find Watercraft**

Images can be searched for moving and non-moving watercraft in open water environments

### **Measure Relative Water Depth**

Images of relative water depths can be generated and exported to graphic files for use in reports or briefings

### **Conduct TERCAT (Terrain Categorization)**

Terrain classifications can be automatically generated or created by user defined specifications

### **Assess Vegetation Delineation and Stress Detection**

Vegetation delineation and stress can be quickly identified and visualized to determine the level of vigor

### **Find Similar Materials**

Find all instances of a specific material based on its spectral response

## **ENVI. Automated Workflows for Fast and Accurate Image Processing and Analysis**

Improve your image processing and analysis workflow today.

Find resources and information or purchase ENVI at

[www.ittvis.com/ENVI](http://www.ittvis.com/ENVI) or call 303.786.9900.



Visit us at [www.ittvis.com/ENVI](http://www.ittvis.com/ENVI).

*Engineered for life*