

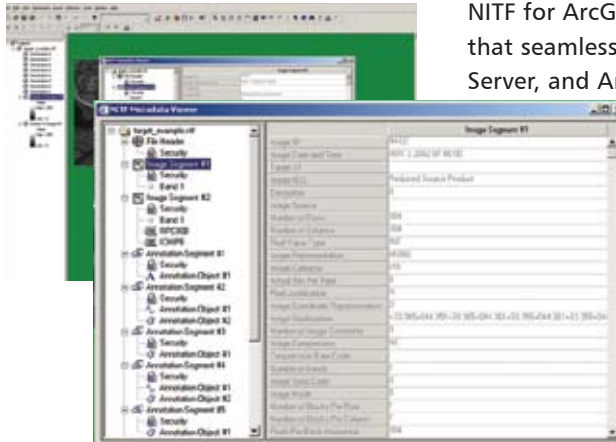


# ITT

## Visual Informations Solutions

### NITF for ArcGIS

Proven, standards-based support for your GIS workflow.



NITF for ArcGIS is an extension for the ESRI® ArcGIS® platform that seamlessly integrates with ArcGIS Desktop, ArcGIS Image Server, and ArcGIS Server to give you a proven solution for using data in the National Imagery Transmission Format (NITF), a common raster data format used in the defense and intelligence communities today.

#### What is the NITF Data Format?

The NITF data format is the imagery and data format widely used by geospatial analysts in the defense and intelligence communities for storing and sharing imagery and data. The NITF format allows you to read and create imagery

and associated metadata – or the detailed information about the context, content, and structure of the image – in a single file.

#### All You Need to Use NITF with Your GIS

The new NITF for ArcGIS extension improves the efficiency and timeliness of your geospatial analysis workflows by allowing you to read NITF data within the ArcGIS environment and create data products with ArcGIS Desktop that comply with NITF specifications. The extension provides full NITF support, and is compliant with the Joint Interoperability Test Command (JITC) standards.

Developed to complement ESRI's interoperable, standards driven platform, the NITF for ArcGIS extension allows you to:

- Easily read and display the data within NITF files
- Write (output) files to the NITF format within ArcGIS Desktop
- Display NITF components
- Easily compress files using the JPEG 2000 standard
- Display NITF metadata in an intuitive metadata viewing window



*With NITF for ArcGIS users can easily read, write, and display NITF data from within the ArcGIS environment. The NITF metadata viewer (top) allows you to easily see your image's associated information.*



Visit us at [www.ittvis.com/ENVI](http://www.ittvis.com/ENVI).

#### Adding NITF to Your GIS Just Got Easier

Begin using the NITF format today to enhance your GIS. Find resources and information or purchase NITF for ArcGIS at [www.ittvis.com/ENVI](http://www.ittvis.com/ENVI) or call 303.786.9900.

*Engineered for life*